

KADCO USA

WWW.KADCOUSA.COM 1-800-448-5503

ASSEMBLY OF 200L & 200P SERIES CARTS

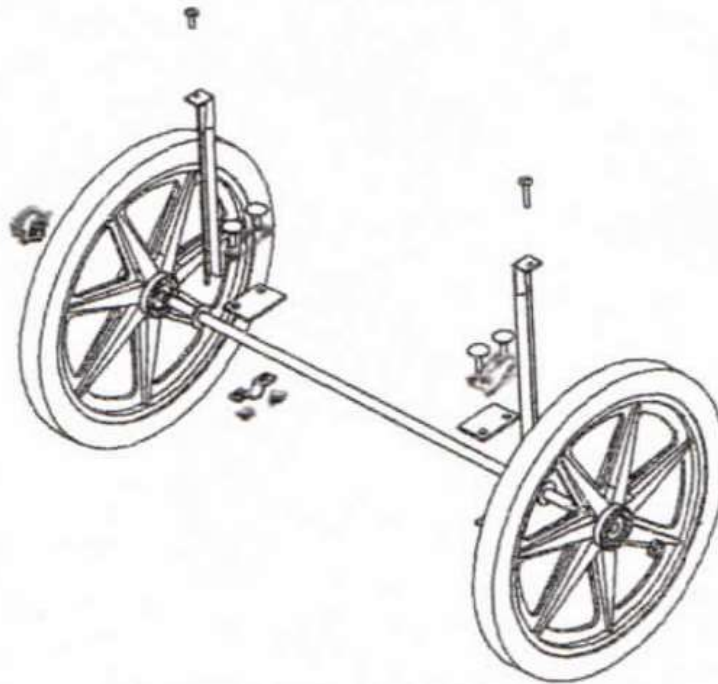
Assembling Handle & Legs

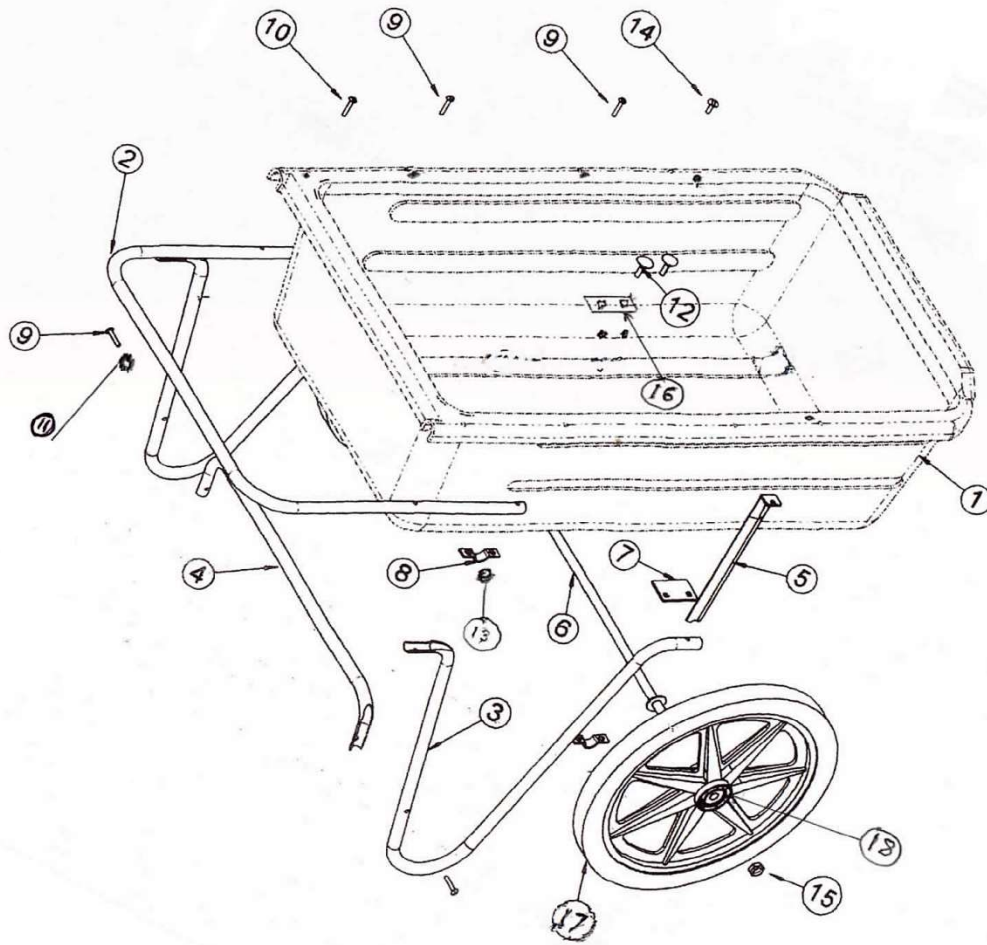
- A. Place the black tub body (item 1) onto a flat surface with the open side facing down. You will notice that there is a channel under the top edge (lip) of the tub.
- B. The handle (item 2) has 4 holes in it. One side has a dimpled hole. Place the handle inside the channel of the tub so that the handle protrudes from the two end openings of the tub lip. The dimpled hole side should face down & mate with the tub body. Line up the four handle holes with the four holes in the tub lip (See cart assembly diagram for position). Insert one of the $\frac{1}{4}$ " x $1\frac{1}{2}$ " slotted screws into the second hole from the end of the tub w/handle & through corresponding handle hole. Hand tighten one of the $\frac{1}{4}$ " lock nuts onto the screw. Repeat on other side of tub. (**DO NOT** fully tighten hardware until completing leg & handle assembly section).
- C. Tip tub on its side. Insert one of the $\frac{1}{4}$ " x $1\frac{3}{4}$ " screws into the remaining handle hole on that side. Select one of the support legs & note one end has a formed shape to fit over the tube shape of the handle. Place that end of the leg onto the screw & handle & hand tighten a $\frac{1}{4}$ " lock nut onto the screw. The other end of the leg is round tube with a hole which will line up to the corresponding hole in the tub. Fit a $\frac{1}{4}$ " x $1\frac{1}{2}$ " screw through the tub & leg (May be necessary to spring the leg slightly to ensure holes align properly). Screw another $\frac{1}{4}$ " lock nut finger tight onto the screw.
- D. Repeat step C to install second leg.
- E. You will notice a hole in the side of the legs for the cross brace. Fit the cross brace between the rear struts of the legs as shown in the diagram with the tube portion against the bottom of the cart tub. Fit two screws $\frac{1}{4}$ " x $1\frac{1}{2}$ " from the outside through the holes in the legs & cross brace. Install two $\frac{1}{4}$ " lock nuts. The screw head should be on the outside. (Notice one side of the hole in the leg is dimpled where the screw is positioned while the other side is not. This is standard as all the legs are punched the same so the legs will fit either side.)
- F. You've now installed all handle & leg parts of the cart! Proceed to tighten all nuts with a $7/16$ " socket or wrench. The screw head should be held from turning with a large flathead screwdriver.

Assembly of Axle, Axle Supports & Wheels

- A. Place tub body on its side. Reaching into tub body, place two carriage bolts & one stainless washer plate through the two holes that are at the bottom of the tub body. Position one of the flat axle plates onto the two carriage bolts sticking through the bottom of the tub. Note the square holes in the flat plate are offset & should be positioned with the larger side facing inward toward the center of the tub. **See diagram**
- B. Place axle rod over flat plate so it fits between the two bolts protruding from the bottom of tub body.
- C. Fit one of the U brackets over the axle & onto the protruding bolts. Thread two $5/16$ " lock nuts onto the bolts & hand tighten.
- D. Flip the tub onto the opposite side & repeat steps A-C. With both brackets assembled, center the axle. **DO NOT TIGHTEN AXLE NUTS YET.**

- E. To install axle supports flip the tub upside down. Place the notched end onto the axle rod with the small right angled portion facing out. The notched end should be positioned between the inside of welded washer on the axle & tub body. *This keeps the support from interfering with the wheel when installed.* *Note: for easier assembly the supports can be installed in an angled position coinciding with the rounded underside of the tub lip.* Using a large flat screwdriver, scoot that end of the support into the perpendicular position & the oval hole in the support lines up with the corresponding hole in the tub. Now install one ¼" x 1" screw into the hole in tub & through the support. Thread one ¼" locknut on the underside. When both supports are installed you may tighten these screws using flat screwdriver. & 7/16" wrench. *Note: Only tighten the nut to where the support is fitting snugly into the rounded channel of the tub lip. Over tightening with result in distortion of tub lip.* The support is a tight fit between the axle & tub lip. It will not dislodge from the axle when using your cart.
- F. At this point the nuts holding the axle should be tightened. Place cart upside down for easy access. Axle needs to be centered so wheel spacing is the same on both sides. The distance from axle end to U bracket should be *approx. 6"* from both sides. Axle should slide to achieve alignment. Once achieved, tighten 4 lock nuts using ½" wrench. Tighten until there is no gap between U bracket & flat plate. Your axle is now firmly fastened to cart body!
- G. Installing wheels. Place one wheel onto axle end & slide into position so center bearing fits against welded washer. Select a wheel locknut & thread onto the axle hand tight. You should only get a couple turns before lock section binds on the thread. Using 10 or 12" adjustable wrench, carefully begin to tighten the wheel nut while turning the wheel. As nut begins to tighten you'll notice the wheel turning more firmly. Tighten the nut until you feel the resistance is such that the wheel no longer turns freely. Loosen the nut an 1/8th of a turn & spin the wheel. If wheel spins freely you have the correct tightness. If there's still resistance loosen another 1/8th. Repeat procedure for other wheel.
- H. Now you've assembled your cart and should enjoy years of trouble free service. For all replacements parts you can shop online at WWW.KADCOUSA.COM or call **518-773-2371** or toll free at **1-800-448-5503**





Contents	Part Number	Qty
1. Tub Body	200-010	1
2. Handle	200-030	1
3. Support Leg	200-040	2
4. Cross Brace	200-051	1
5. Axle Support	200-052	2
6. Axle 5/8	200-021-1	1
7. Flat Axle Plate	200-022-1	2
8. U Bracket	200-024	2
9. 1/4" x 1 1/2" Slotted Screw	200-908	6
10. 1/4" x 1 3/4" Slotted Screw	200-903	2
11. 1/4" Nyloc Nut	200-904	10
12. 5/16" x 1" SS Carriage Bolt	200-901	4
13. 5/16" SS Nyloc Nut	200-907	4
14. 1/4" x 1" Slotted Screw	200-906	2
15. 5/8" Nyloc Nut	200-902	2
16. Stainless Plate	200-022	2
17. Black Plastic Wheel Assembly	200-071	2
18. 5/8 Wheel Bearing	200-933	4

Thank you for choosing the Kadco Carry-It Cart. We have been manufacturing these carts for over 30 years in the USA. You can rest easy knowing that you purchased a quality product that will provide years of good use. Many of our carts are still in use after more than 25 years of service. We invest a lot of time selecting the materials we use to manufacture our products. The tubing on your cart is made from Allied Zinc Flo-Coat® steel. This zinc coating process provides uniform corrosion resistant finish and a protective clear coating. Our cart bodies are made from black recycled HMPE plastic that will endure the sun's harsh UV rays. We vigorously test our carts in a variety of situations to be sure that they exceed our specifications and, more importantly, your expectations. Please contact us with any comments or concerns.

KADCO USA

PO Box 584
Amsterdam, NY 12010
800-448-5503
www.kadcousa.com



These simple tools are required:

Screwdriver
7/16" deep socket or wrench
1/2" deep socket or wrench
10" adjustable wrench



Made in the USA

© 2003 Kadco USA Inc. All rights reserved.